



ATI FirePro™ V3800

Professional Graphics



Command Your Creations



- **Outstanding performance for the 3D entry segment**
- **10x more computing capability over prior generation⁴**
- **Support both dual-link DVI and DisplayPort connectivity**
- **Supports up to 2 independent 30" displays²**
- **512 MB DDR3 memory**
- **Scalable ultra parallel processing architecture with 400 stream processors**
- **AutoDetect instinctively optimizes performance for multi-application workflow**
- **Hardware acceleration of DirectX® 11 & OpenGL® 4.1 advanced features**
- **Optimized and certified for many CAD and DCC applications**
- **PCI Express® 2.1 compliant**

ISV certified professional graphics card for \$99 MSRP

Introducing the ATI FirePro™ V3800 professional graphics from AMD. This entry-level workstation solution with 512 MB of DDR3 frame buffer memory is ideally suited for entry-level CAD users who work with small to medium sized models and fewer assembly parts and components. Its 30-bit display pipeline¹ offers accurate color reproduction and advanced visual quality.

Based on a new generation GPU with 400 stream processors, the ATI FirePro™ V3800 ultra parallel processing architecture optimizes throughput by automatically directing graphics horsepower where it's needed. Intelligent management of computational resources allows enhanced utilization of the GPU to enable real-time rendering of complex models and scenes while enabling increased frame rates when animating.

The ATI FirePro™ V3800 features two independent outputs² enabling improved productivity at a low acquisition and operating cost. In addition, with native multi-card support, users can see more and do more using four displays being driven by two ATI FirePro™ V3800 products in the same workstation.³

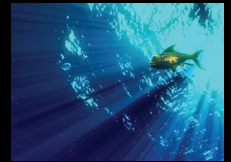
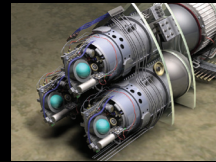
ATI FirePro™ professional graphics cards are thoroughly tested and certified with major Computer Aided Design (CAD) and Digital Content Creation (DCC) applications, ensuring a level of reliability not found in consumer graphics products.

Innovation and Reliability from AMD

ATI FirePro™ professional graphics have been engineered to deliver innovation and reliability for a wide range of professional operating environments, including Windows® 7, Windows® XP, Windows Vista® and Linux®. The unified driver, which supports all ATI FirePro™ workstation products, helps reduce the total cost of ownership by simplifying installation, deployment and maintenance.

In addition, ATI FirePro™ professional graphics incorporate a unique AutoDetect technology. As users open new 3D applications, or move between them, ATI FirePro™ graphics driver settings are automatically configured for optimized performance, no matter what the user's workflow demands.





ATI FirePro™ V3800

Professional Graphics

Features	Benefits
AutoDetect Technology	As a user moves between applications, or opens new ones, the graphics driver settings are automatically configured for optimized performance
Full 30-bit Display Pipeline	Enables more color values than 24-bit products for more accurate color reproduction and superior visual fidelity ¹
Multi-View Display	With one DisplayPort outputs and one dual-DVI output, Multi-View enables up to four displays with independent display resolution, refresh rate, and display rotation settings
Full Shader Model 5.0 Support	Create more complex geometry and scenes without taxing the CPU
Certification	There is a high level of assurance when purchasing a configuration that is reliable and provides the performance necessary for professional 3D graphics needs
DirectX® 11 and OpenGL® 4.1 Advanced Features	Great performance, scalability and reliability
OpenCL™ 1.1	Industry standard API - Open, multiplatform development platform for enabling broad adoption of heterogeneous computing ⁵

Ordering Information	
Retail SKU	
Part Number	100-505607
UPC Code	727419415149
Retail Package Weight	1.50 lbs (0.68 Kg)
Retail Package Dimensions	9.5x11.5x2.88in(24.13x29.21x7.31cm)

¹ Thirty-bit monitor required for full 30-bit display.

² Each ATI FirePro™ V3800 graphics card supports up to two independent displays using one DisplayPort connector and one dual-link DVI connector.

³ Specific power, chassis, space, connector and resource requirements may apply. Check with system manufacturer to see if dual cards are supported.

⁴ Based on 400 stream processors for ATI FirePro™ V3800 vs. 40 stream processors for ATI Fire™ Pro V3700.

⁵ OpenCL™ compliant driver and SDK release scheduled in 2010.

⁶ Linux drivers can be downloaded from amd.com

⁷ Toll free hotline available in North America.



For more information, visit www.amd.com/firepro

Product Specifications	
GPU	
Stream Processors	400
Memory Interface	64-bit
Memory	
Size/Type	512 MB DDR3
Bandwidth (GB/s)	14.4
Display Outputs	
Display Ports	1 Standard
Dual-link DVI	1
Max Resolution	2560x1600 @ 60Hz
API/Feature/OS Support	
DirectX®	11
OpenGL®	4.1
Shader Model	5.0
Stream Computing	Yes (OpenCL® 1.1 ⁵)
OS Support	Microsoft® Windows® 7, Windows® XP, Windows Vista®, Linux® ⁶ (32-bit or 64-bit)
Thermal/Power/Form Factor	
Max Power	43 W
Slot(s)	1
Form Factor	Small Form Factor
Support Energy Star® 5.0 Compliance	Yes
Bus Interface	PCI Express® 2.1 x16
Additional Details	
System Requirements	<ul style="list-style-type: none"> → 512MB of system memory → CD-ROM drive (or internet access) for software installation → 350-Watt power supply or greater
Retail Package Contents	<ul style="list-style-type: none"> → ATI FirePro™ V3800 professional graphics card → Installation CD with drivers and documentation → Quick Start Reference Guide → One DP to DVI (single-link) adapters → One ATI CrossFire™ Pro connection cable → One DVI to VGA adapter → One low-profile bracket (In addition to the full-height bracket mounted on the card)
ISV Certifications	Many major CAD and DCC applications (visit http://ati.amd.com/products/workstation/certified_graphics_accelerators.html for complete listing)
Warranty and Support	<ul style="list-style-type: none"> → Three year limited product repair/replacement warranty → Direct toll free phone and email access to dedicated workstation technical support team⁷