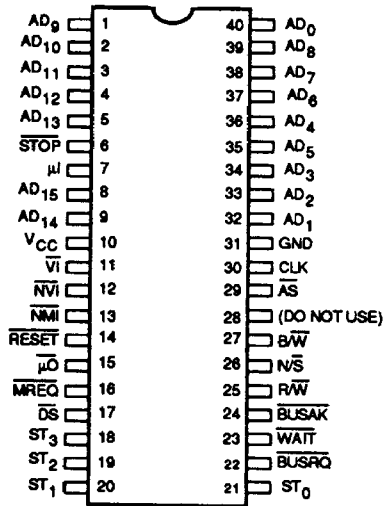


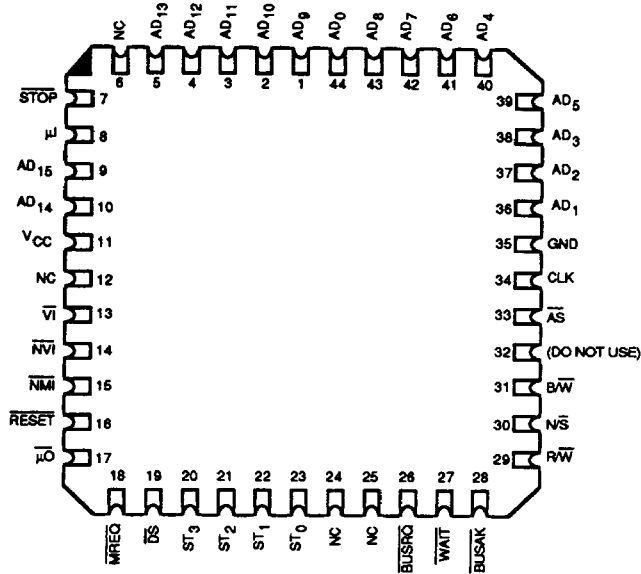
CONNECTION DIAGRAMS
Top View

DIPs



CD011190

LCC



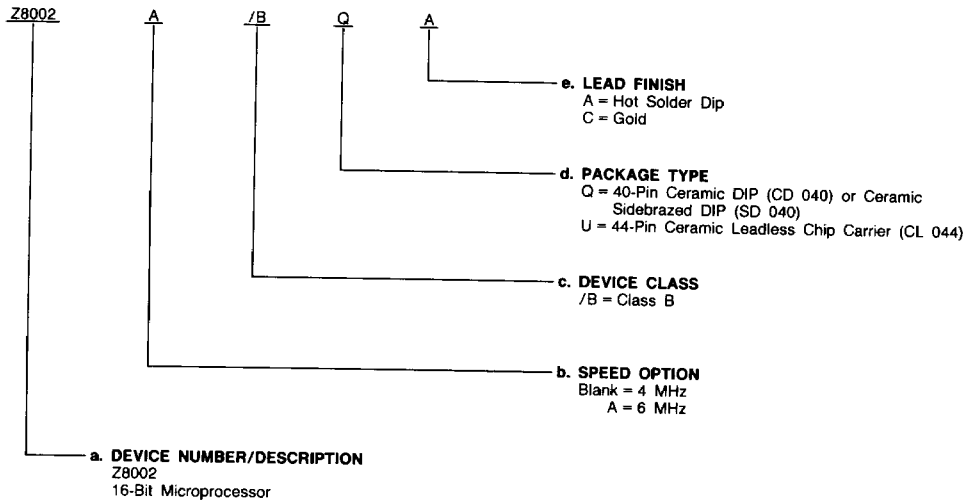
CD011180

MILITARY ORDERING INFORMATION

APL Products

AMD products for Aerospace and Defense applications are available in several packages and operating ranges. APL (Approved Products List) products are fully compliant with MIL-STD-883C requirements. The order number (Valid Combination) is formed by a combination of:

- a. **Device Number**
- b. **Speed Option** (if applicable)
- c. **Device Class**
- d. **Package Type**
- e. **Lead Finish**



Valid Combinations	
Z8002	/BQA, /BQC, /BUA
Z8002A	

Valid Combinations

Valid Combinations list configurations planned to be supported in volume for this device. Consult the local AMD sales office to confirm availability of specific valid combinations or to check for newly released valid combinations.

Group A Tests

Group A tests consist of Subgroups 1, 2, 3, 7, 8, 9, 10, 11.

ABSOLUTE MAXIMUM RATINGS

Storage Temperature -65 to +150°C
 Voltage at any Pin
 Relative to V_{SS} -0.3 to +7.0V
 Power Dissipation 2.5W

Stresses above those listed under ABSOLUTE MAXIMUM RATINGS may cause permanent device failure. Functionality at or above these limits is not implied. Exposure to absolute maximum ratings for extended periods may affect device reliability.

OPERATING RANGES

Military (M) Devices
 Temperature (T_C) -55 to +125°C
 Supply Voltage (V_{CC}) 5 V ± 5%

Operating ranges define those limits between which the functionality of the device is guaranteed.

DC CHARACTERISTICS over operating range (for APL Products, Group A, Subgroups 1, 2, 3 are tested unless otherwise noted)

Parameter Symbol	Parameter Description	Test Conditions	Min.	Max.	Unit
V _{CH} †	Clock Input HIGH Voltage	Driven by External Clock Generator	V _{CC} -0.4	V _{CC} +0.3*	V
V _{CL} †	Clock Input LOW Voltage	Driven by External Clock Generator	-0.3*	0.45	V
V _{IH} †	Input HIGH Voltage			V _{CC} +0.3*	V
V _{IH} NMI, † Reset	Input HIGH Voltage		4	V _{CC} +0.3*	V
V _{IL} †	Input LOW Voltage		-0.3*	0.8	V
V _{OH}	Output HIGH Voltage	I _{OL} = -2mA	2.4		V
V _{OL}	Output LOW Voltage	I _{OL} = 2.0mA		0.4	V
I _{IL}	Input Leakage Current Except SEG _T Pin	0.4 ≤ V _{IN} ≤ +2.4V		±10	μA
I _{IL} on SEG _T	Input Leakage on SEG _T Pin		-100	100	μA
I _{OL}	Output Leakage	0.4 ≤ V _{OUT} ≤ +2.4V		±10	μA
I _{CC}	V _{CC} Supply Current (Note 1)			400	mA

* Not tested; guaranteed by design.

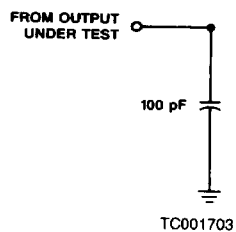
† Group A, Subgroups 7 and 8 only are tested.

Notes: 1. I_{CC} is measured while running a functional pattern with the loads turned on.

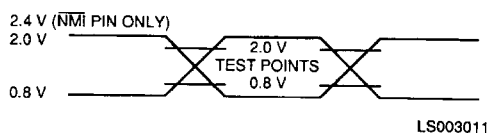
Standard Test Conditions

The characteristics below apply for the following test conditions, unless otherwise noted. All voltages are referenced to GND. Positive current flows into the referenced pin. Standard conditions are as follows:

SWITCHING TEST CIRCUIT

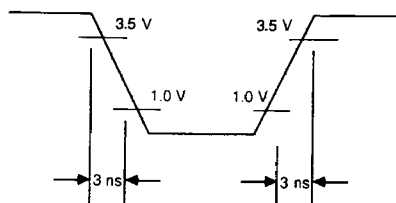


**SWITCHING TEST WAVEFORMS
Input/Output**

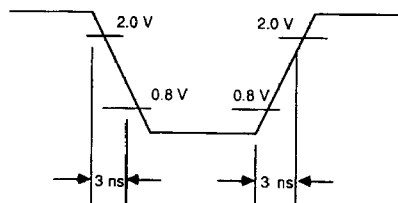


AC testing outputs are driven at 2.0 V for a logical 1 and 0.5 V for a logical 0. The clock is driven at V_{CC} -0.4 V and 0.45 V. Timing measurements are made at 2.0 V for a logical 1 and 0.5 V for a logical 0.

AC Clock Input



AC Input (Except Clock)



SWITCHING CHARACTERISTICS over operating range (for APL Products, Group A, Subgroups 9, 10, 11 are tested unless otherwise noted)

No.	Parameter Symbol	Parameter Description	4-MHz Devices		6-MHz Devices		Unit
			Min.	Max.	Min.	Max.	
1	TcC	Clock Cycle Time	250	500	160	500	ns
2	TwCh	Clock Width (HIGH)	105	250	70	250	ns
3	TwCl	Clock Width (LOW)	105	250	70	250	ns
4	TfC	Clock Fall Time (Note 1)		20		10	ns
5	TrC	Clock Rise Time (Note 1)		20		15	ns
8	TdC(Bz)	Clock \uparrow to Bus Float (Note 2)		65		55	ns
9	TdC(A)	Clock \uparrow to Address Valid		100		75	ns
10	TdC(Az)	Clock \uparrow to Address Float (Note 2)		65		55	ns
11	TdA(DR)	Address Valid to Read Data Required Valid (Note 2)		475		305	ns
12	TsDI(C)	Data In to Clock \downarrow Setup Time	50		20		ns
13	TdDS(A)	\overline{DS} \uparrow to Address Active (Note 2)	80		45		ns
14	TdC(DW)	Clock \uparrow to Write Data Valid		100		75	ns
15	ThDI(DS)	Data In to \overline{DS} \uparrow Hold Time	0		0		ns
16	TdDO(DS)	Data Out Valid to \overline{DS} \uparrow Delay (Note 2)			195		ns
17	TdA(MR)	Address Valid to \overline{MREQ} \downarrow Delay (Note 2)	85		35		ns
18	TdC(MR)	Clock \downarrow to \overline{MREQ} \downarrow Delay		80		60	ns
19	TwMRh	\overline{MREQ} Width (HIGH) (Note 2)	210		135		ns
20	TdMR(A)	\overline{MREQ} \downarrow to Address Not Active (Note 2)	70		35		ns
21	TdDO(DSW)	Data Out Valid to \overline{DS} \downarrow Write Delay (Note 2)	55		35		ns
22	TdMR(DR)	\overline{MREQ} \downarrow to Read Data Required Valid (Note 2)		370		230	ns
23	TdC(MR)	Clock \downarrow to \overline{MREQ} \uparrow Delay		80		60	ns
24	TdC(ASf)	Clock \uparrow to \overline{AS} \uparrow Delay		80		60	ns
25	TdA(AS)	Address Valid to \overline{AS} \uparrow Delay (Note 2)	55		35		ns
26	TdC(ASr)	Clock \downarrow to \overline{AS} \uparrow Delay		90		80	ns
27	TdAS(DR)	\overline{AS} \uparrow to Read Data Required Valid (Note 2)		360		220	ns
28	TdDS(AS)	\overline{DS} \uparrow to \overline{AS} \downarrow Delay (Note 2)	70		35		ns
29	TwAS	\overline{AS} Width (LOW) (Note 2)	85		55		ns
30	TdAS(A)	\overline{AS} \uparrow to Address Not Active Delay (Note 2)	70		45		ns
31	TdAz(DSR)	Address Float to \overline{DS} (Read) \downarrow Delay (Note 2)	0		0		ns
32	TdAS(DSR)	\overline{AS} \uparrow to \overline{DS} (Read) \downarrow Delay (Note 2)	80		55		ns
33	TdDSR(DR)	\overline{DS} (Read) \downarrow to Read Data Required Valid (Note 2)		205		130	ns
34	TdC(DSr)	Clock \downarrow to \overline{DS} \uparrow Delay		70		65	ns
35	TdDS(DW)	\overline{DS} \uparrow to Write Data and STATUS Not Valid (Note 2)	75		45		ns
36	TdA(DSR)	Address Valid to \overline{DS} (Read) \downarrow Delay (Note 2)	180		110		ns
37	TdC(DSR)	Clock \uparrow to \overline{DS} (Read) \downarrow Delay		120		85	ns
38	TwDSR	\overline{DS} (Read) Width (LOW) (Note 2)	275		185		ns

Notes: See next page for notes.

SWITCHING CHARACTERISTICS (Cont'd.)

No.	Parameter Symbol	Parameter Description	4-MHz Devices		6-MHz Devices		Unit
			Min.	Max.	Min.	Max.	
39	TdC(DSW)	Clock \downarrow to \overline{DS} (Write) \downarrow Delay		95		80	ns
40	TwDSW	\overline{DS} (Write) Width (LOW) (Note 2)	185		110		ns
41	TdDSI(DR)	\overline{DS} (Input) \downarrow to Read Data Required Valid (Note 2)		330		210	ns
42	TdC(DSF)	Clock \downarrow to \overline{DS} (I/O) \downarrow Delay		120		100	ns
43	TwDS	\overline{DS} (I/O) Width (LOW) (Note 2)	410		255		ns
44	TdAS(DSA)	\overline{AS} \uparrow to \overline{DS} (Acknowledge) \downarrow Delay (Note 2)	1065		690		ns
45	TdC(DSA)	Clock \uparrow to \overline{DS} (Acknowledge) \downarrow Delay		20		85	ns
46	TdDSA(DR)	\overline{DS} (Acknowledge) \downarrow to Read Data Required Delay (Note 2)		4		295	ns
47	TdC(S)	Clock \uparrow to Status Valid Delay		110		85	ns
48	TdS(AS)	Status Valid to \overline{AS} \uparrow Delay (Note 2)			30		ns
49	TsR(C)	\overline{RESET} to Clock \uparrow Setup Time	180		70		ns
50	ThR(C)	\overline{RESET} to Clock \uparrow Hold Time	0		0		ns
51	TwNMI	\overline{NMI} Width (LOW)	100		70		ns
52	TsNMI(C)	\overline{NMI} to Clock \uparrow Setup Time	140		70		ns
53	TsVI(C)	\overline{VI} , \overline{NVI} to Clock \uparrow Setup Time	110		50		ns
54	ThVI(C)	\overline{VI} , \overline{NVI} to Clock \uparrow Hold Time	20		20		ns
57	TsMI(C)	\overline{MI} to Clock \uparrow Setup Time	180		110		ns
58	ThMI(C)	\overline{MI} to Clock \uparrow Hold Time	0		0		ns
59	TdC(MO)	Clock \uparrow to \overline{MO} Delay		120		85	ns
60	TsSTP(C)	\overline{STOP} to Clock \downarrow Setup Time	140		80		ns
61	ThSTP(C)	\overline{STOP} to Clock \downarrow Hold Time	0		0		ns
62	TsWT(C)	\overline{WAIT} to Clock \downarrow Setup Time	50		30		ns
63	ThWT(C)	\overline{WAIT} to Clock \downarrow Hold Time	10		10		ns
64	TsBRQ(C)	\overline{BUSRQ} to Clock \uparrow Setup Time	90		80		ns
65	ThBRQ(C)	\overline{BUSRQ} to Clock \uparrow Hold Time	10		10		ns
66	TdC(BAK \uparrow)	Clock \uparrow to \overline{BUSAK} \uparrow Delay		100		75	ns
67	TdC(BAK \downarrow)	Clock \uparrow to \overline{BUSAK} \downarrow Delay		100		75	ns
68	TwA	Address Valid Width (Note 2)	150		95		ns
69	TdDS(S)	\overline{DS} \uparrow to STATUS Not Valid (Note 2)	80		55		ns

Notes: 1. Clock rise and fall times are intended for design information only; not tested.
2. Not tested.

IMAGE UNAVAILABLE